

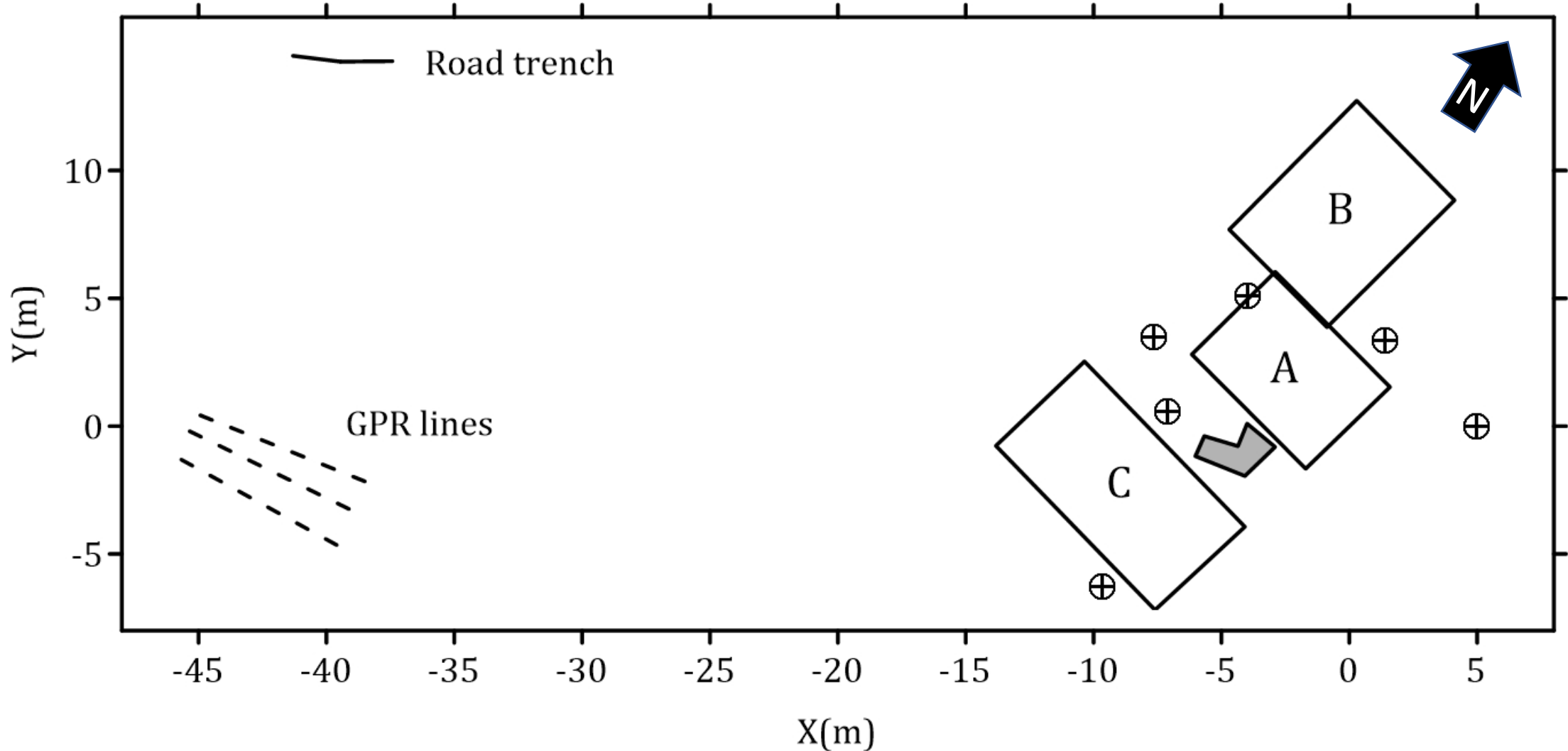
Chapel Croft 3-April-2023

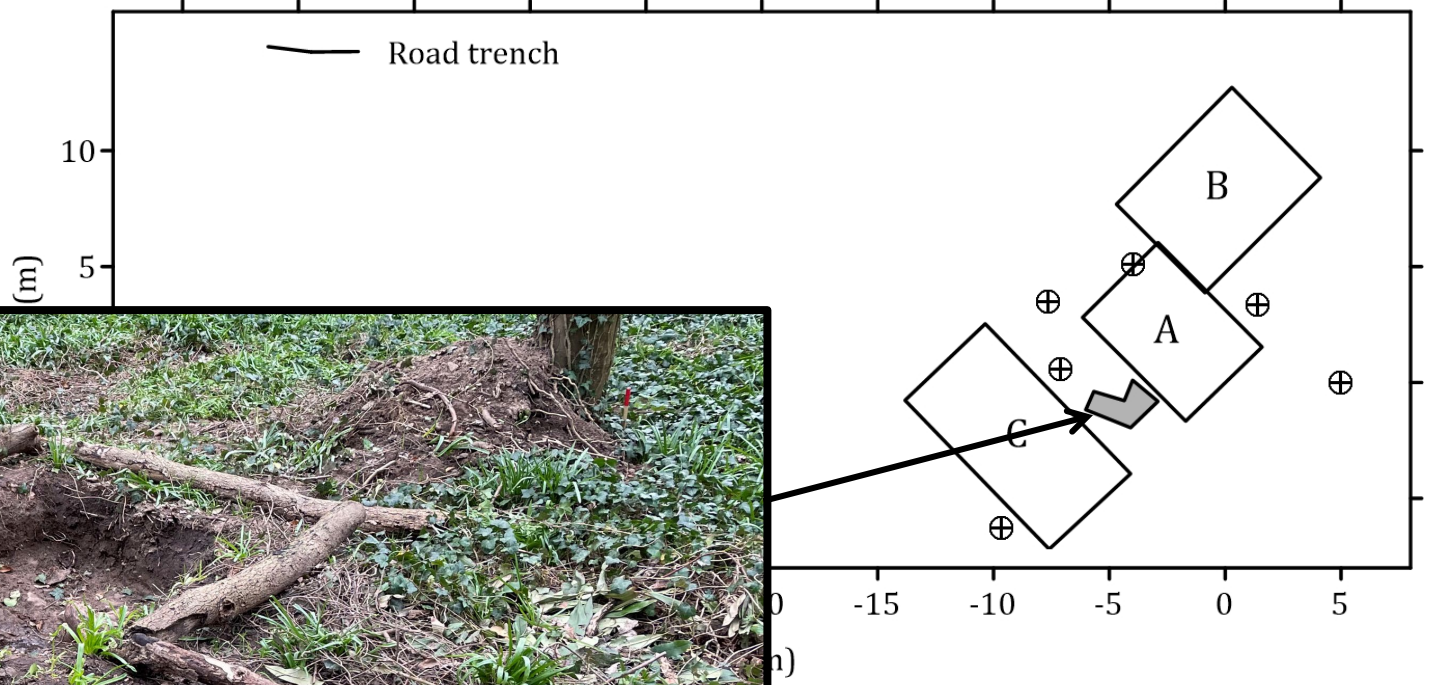


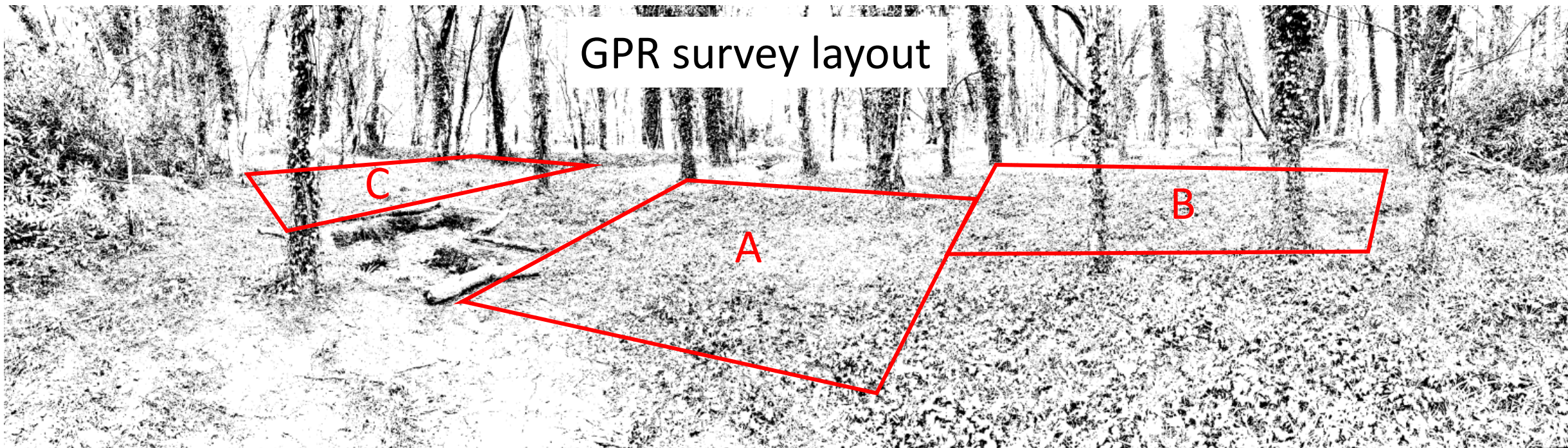
Site layout

GPR: MALA ProEx 500MHz
Leica total station for
positioning of lines

- A,B,C 3D GPR surveys, 0.3 line spacing
- ⊕ Pegs installed for later referencing
- ↷ Trench



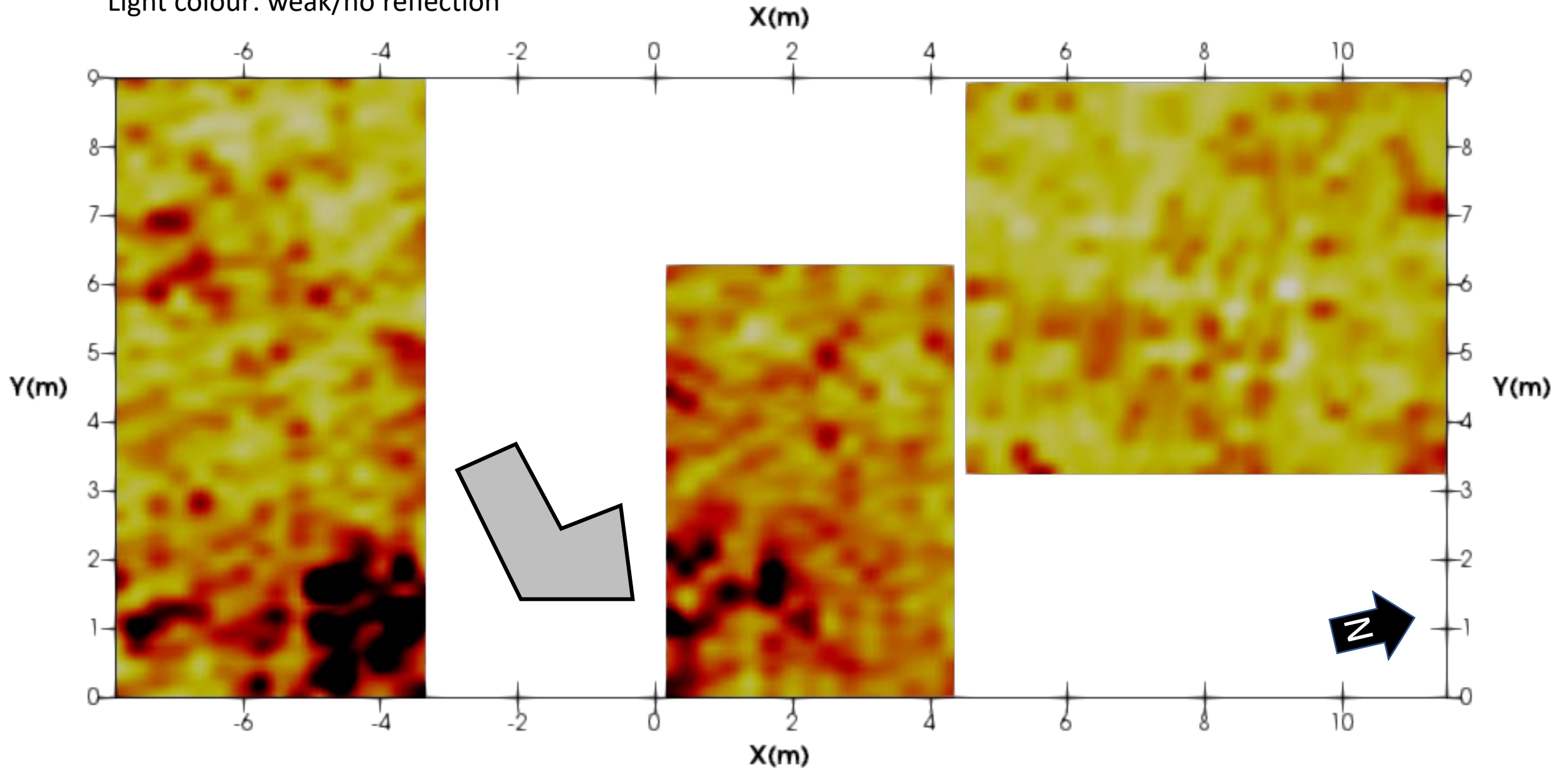




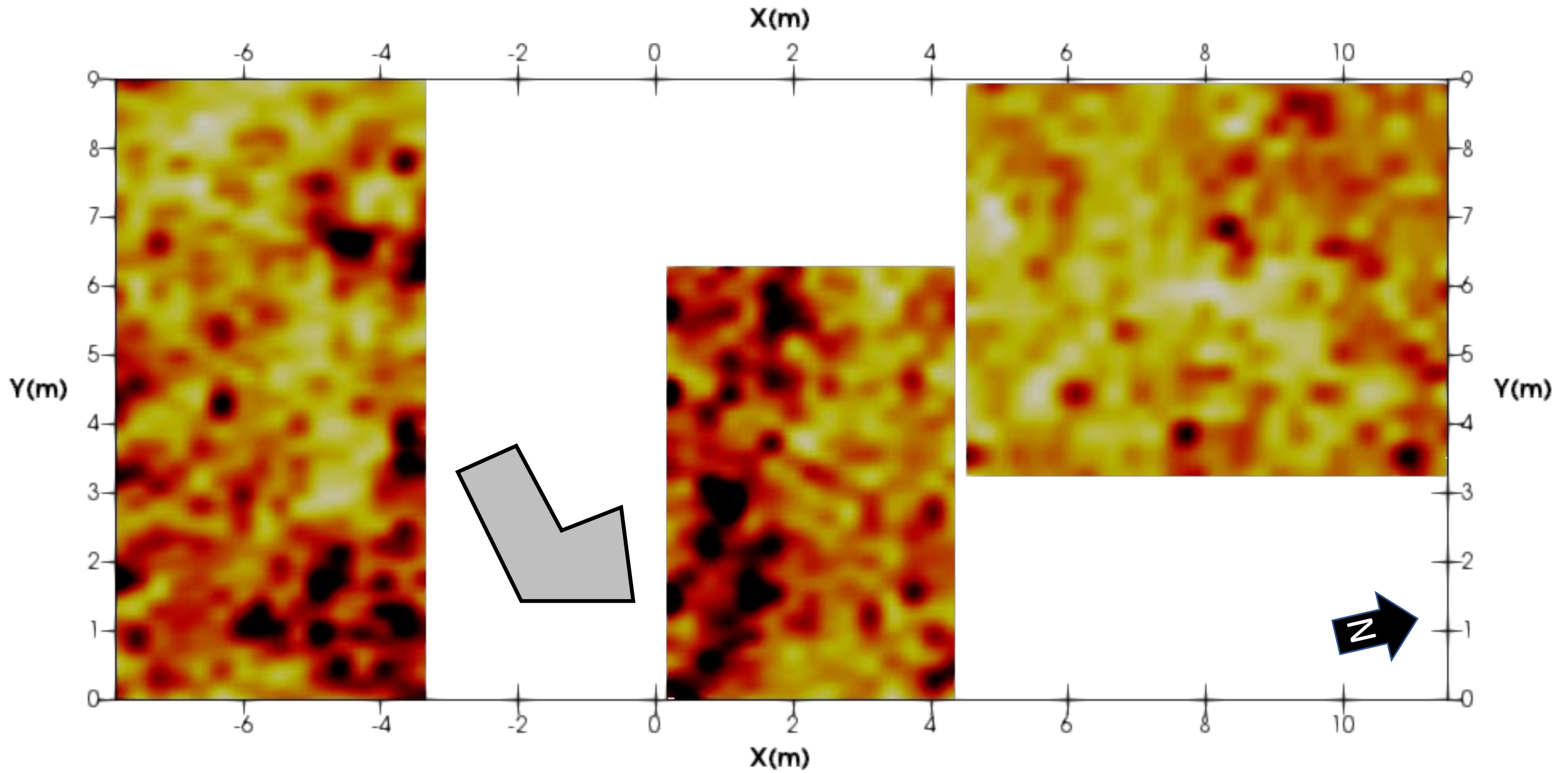
Depth: 0.2m

Dark colours: reflectors

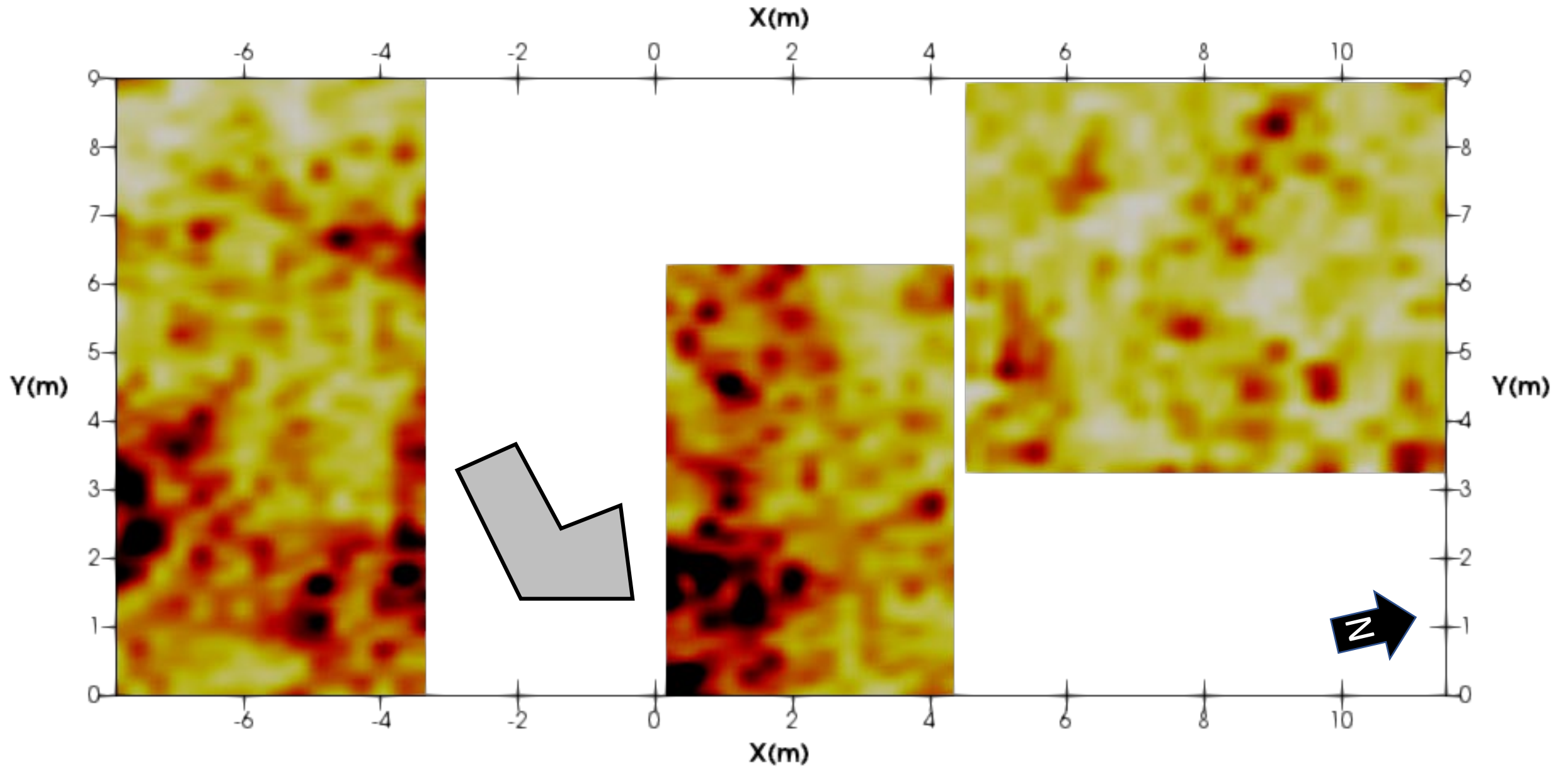
Light colour: weak/no reflection



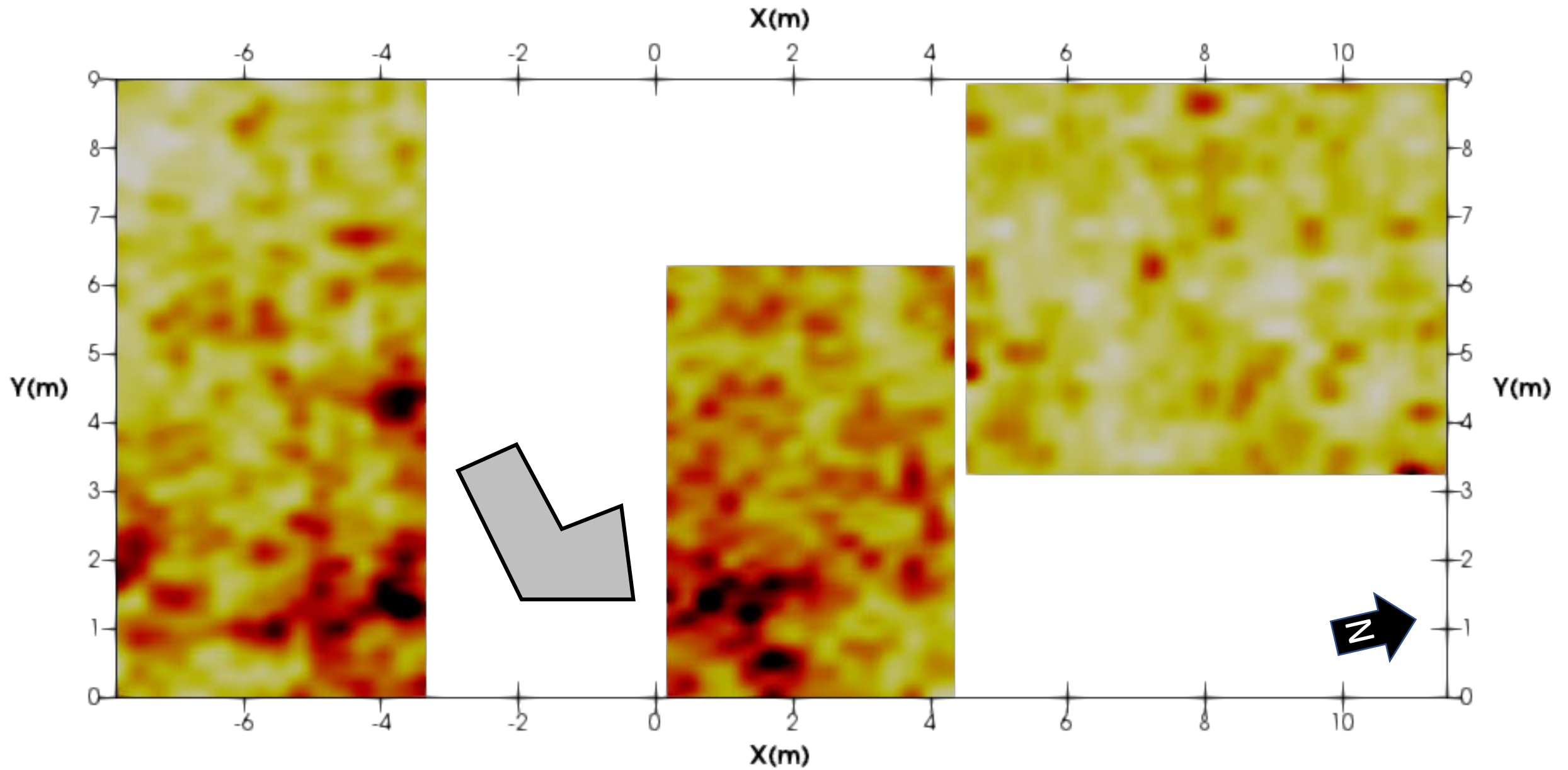
Depth: 0.3m



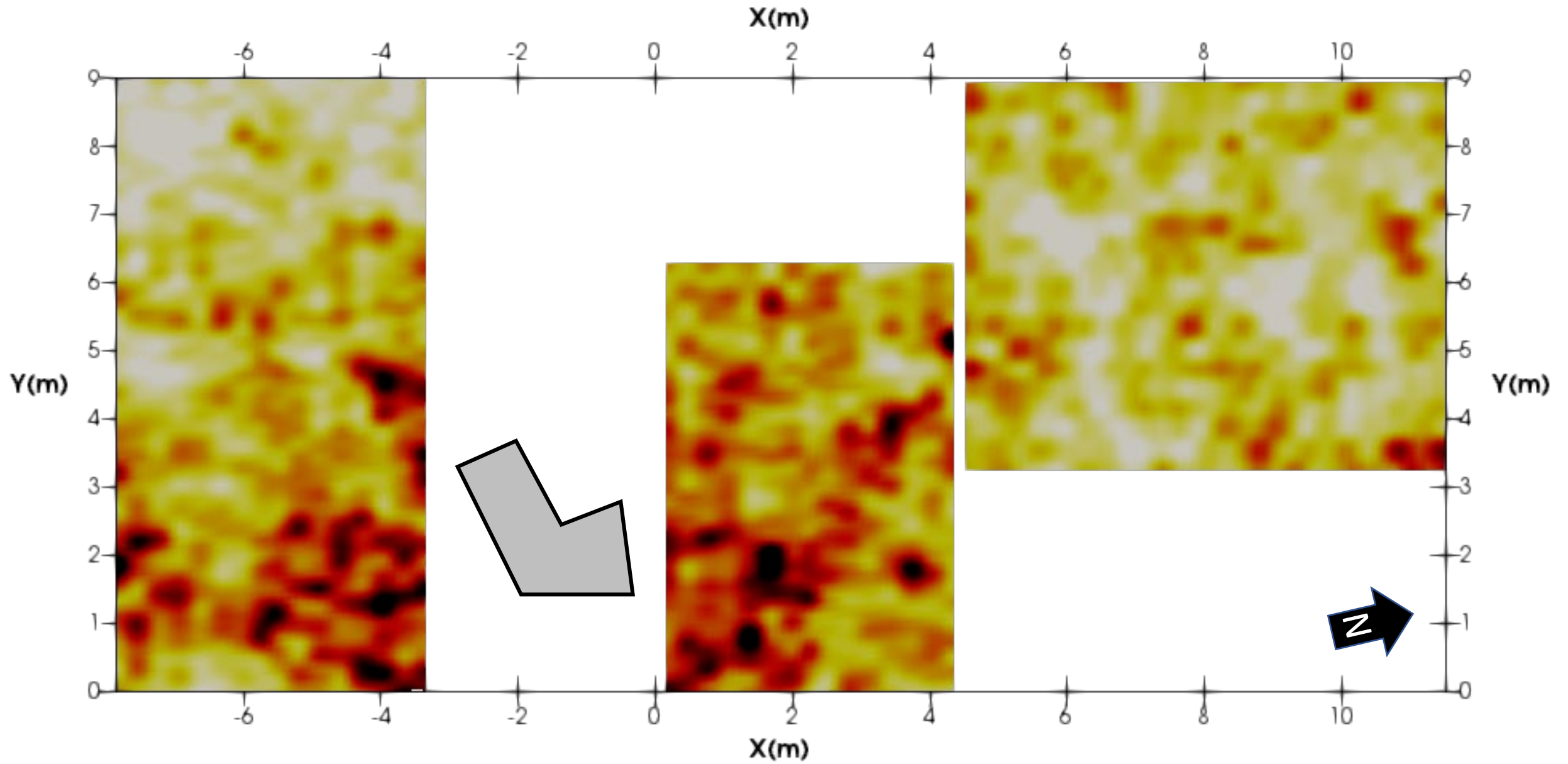
Depth: 0.4m



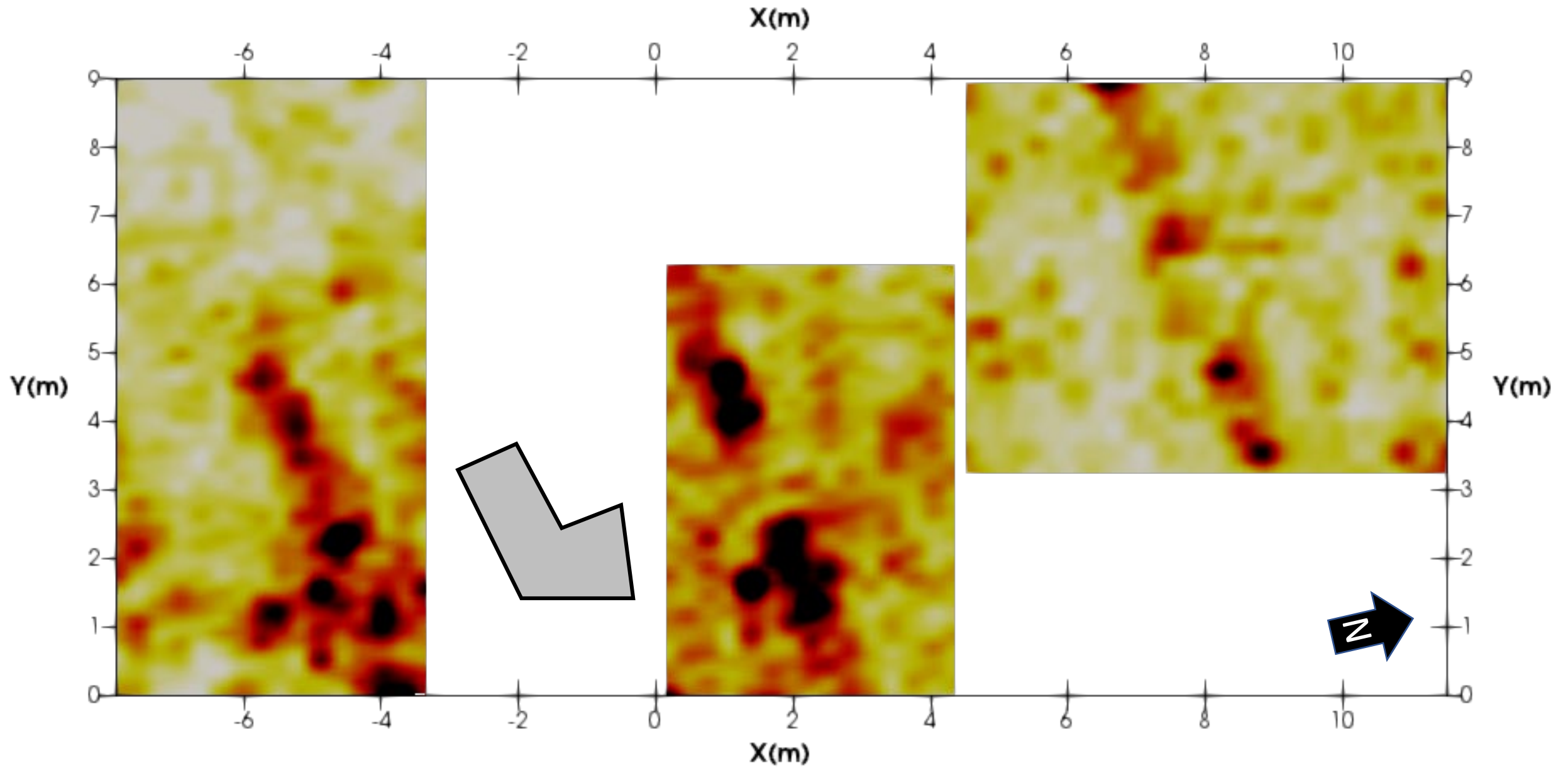
Depth: 0.5m



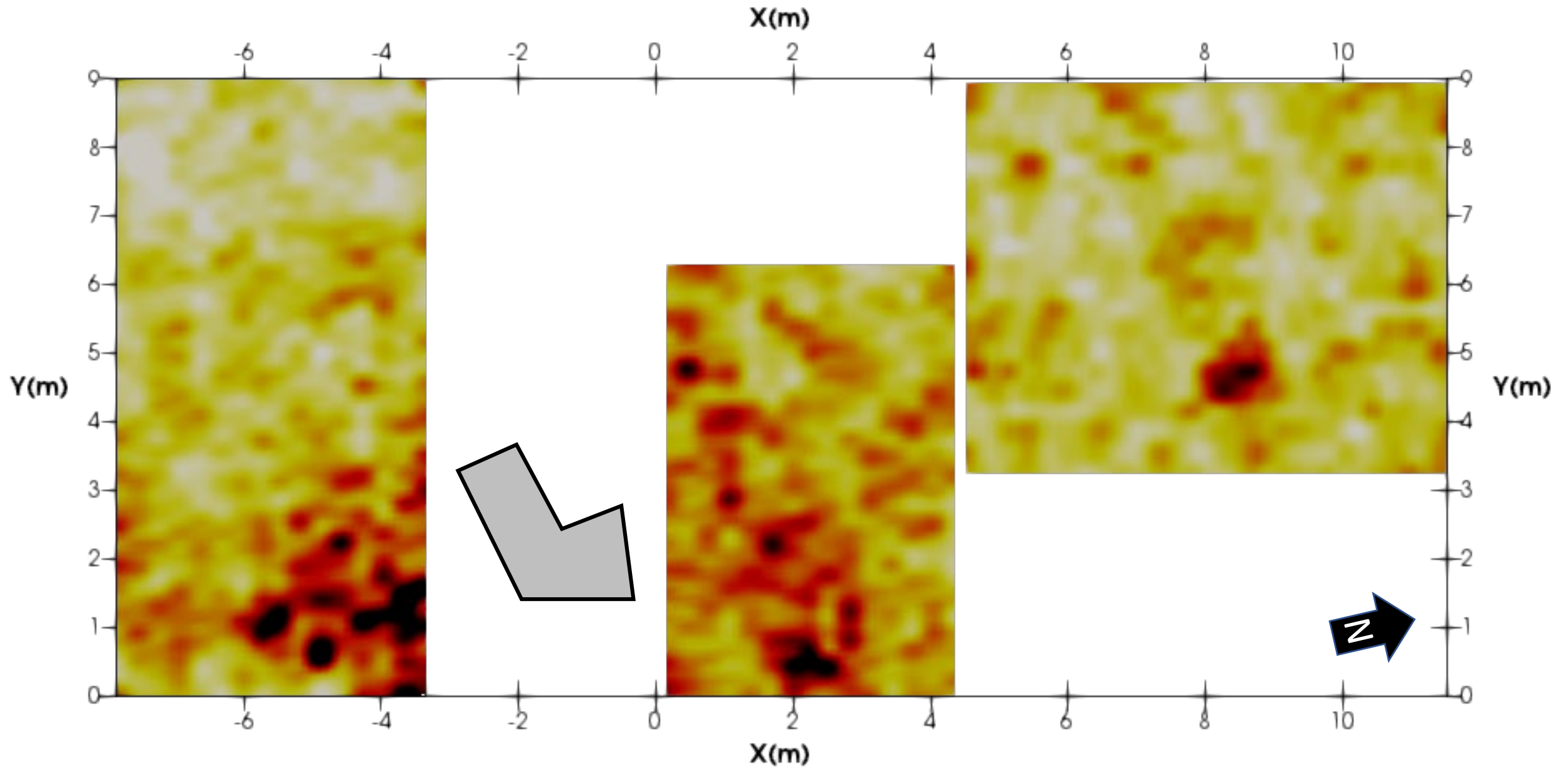
Depth: 0.6m



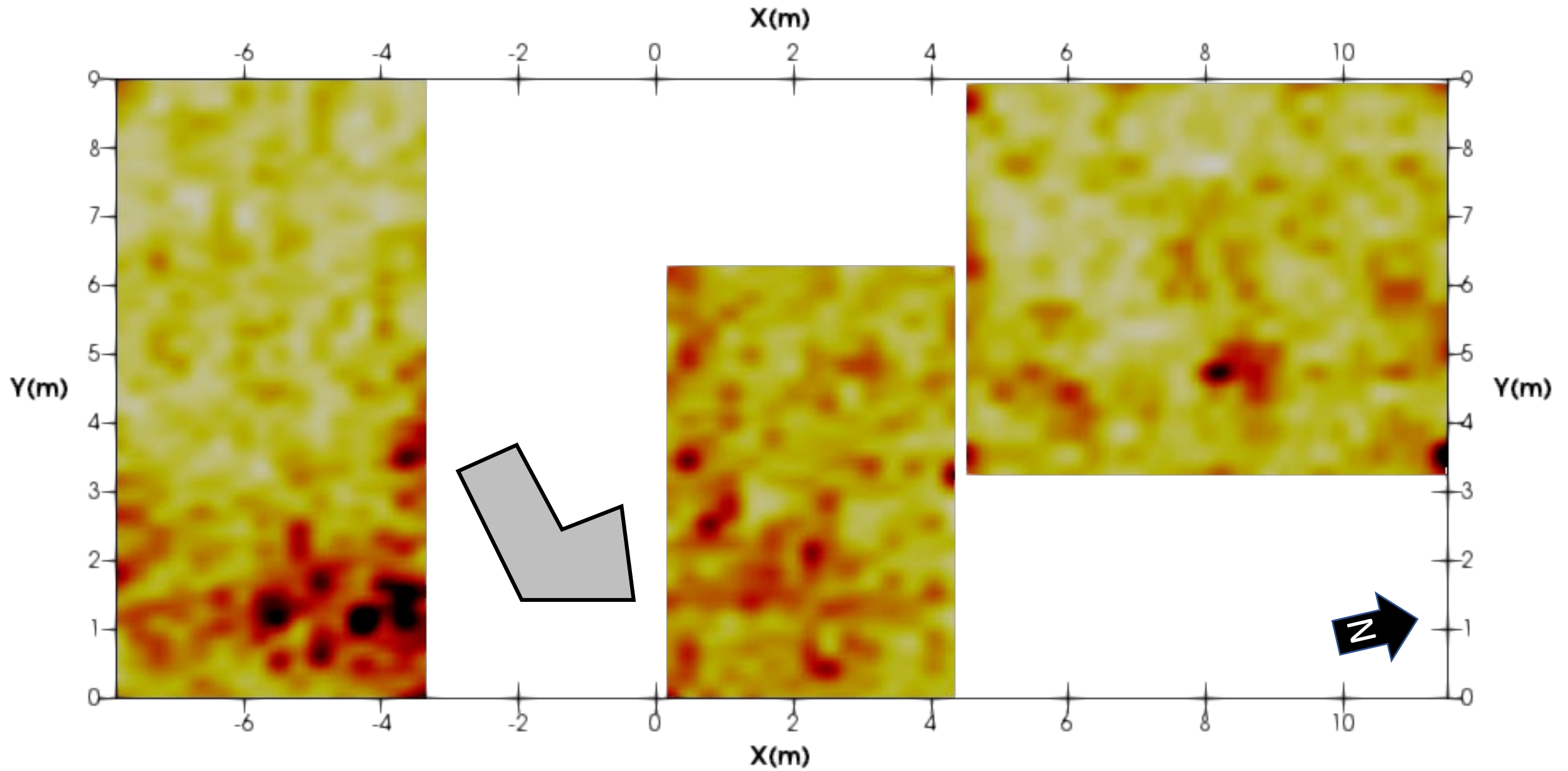
Depth: 0.7m



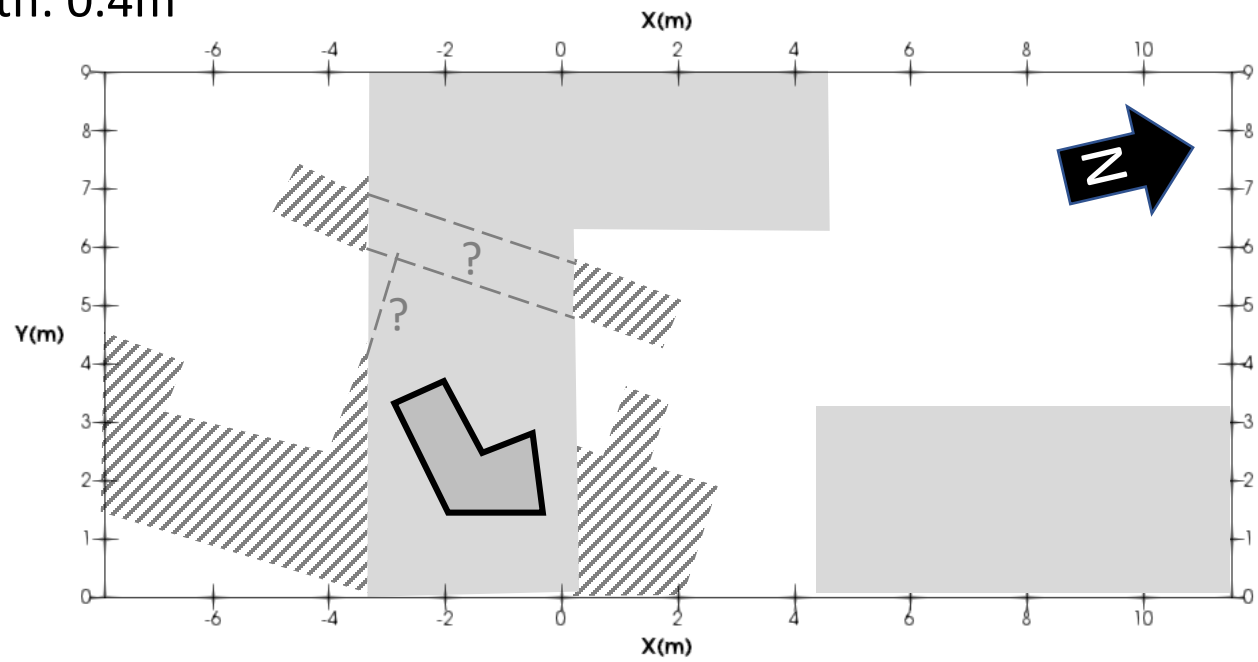
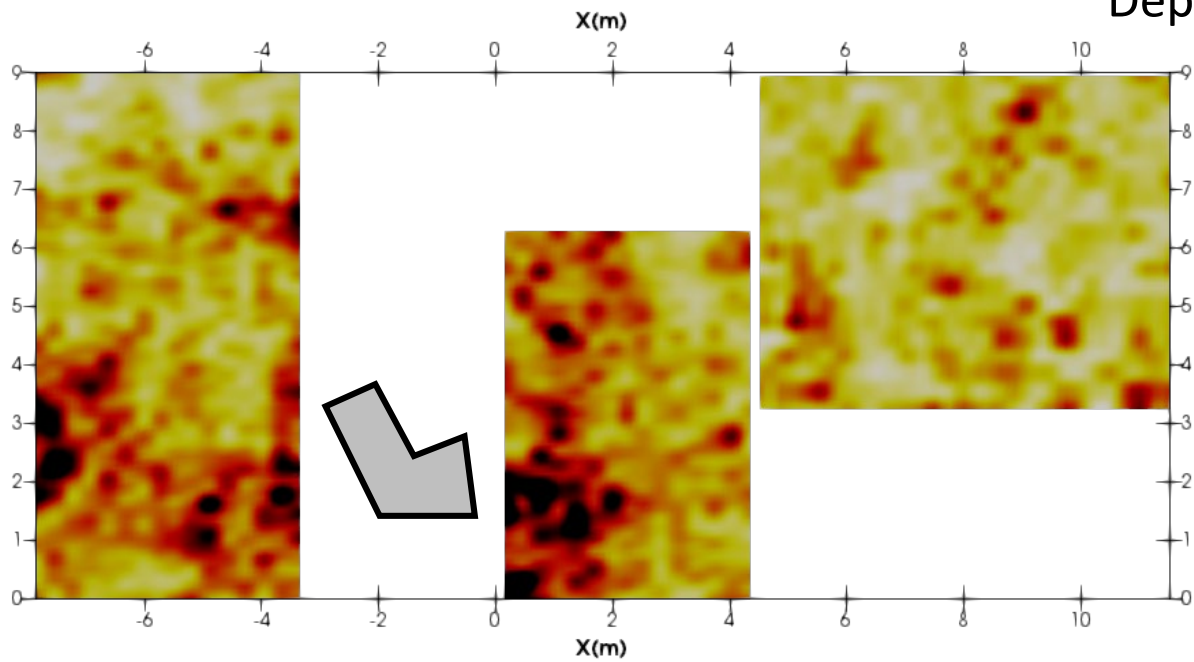
Depth: 0.8m



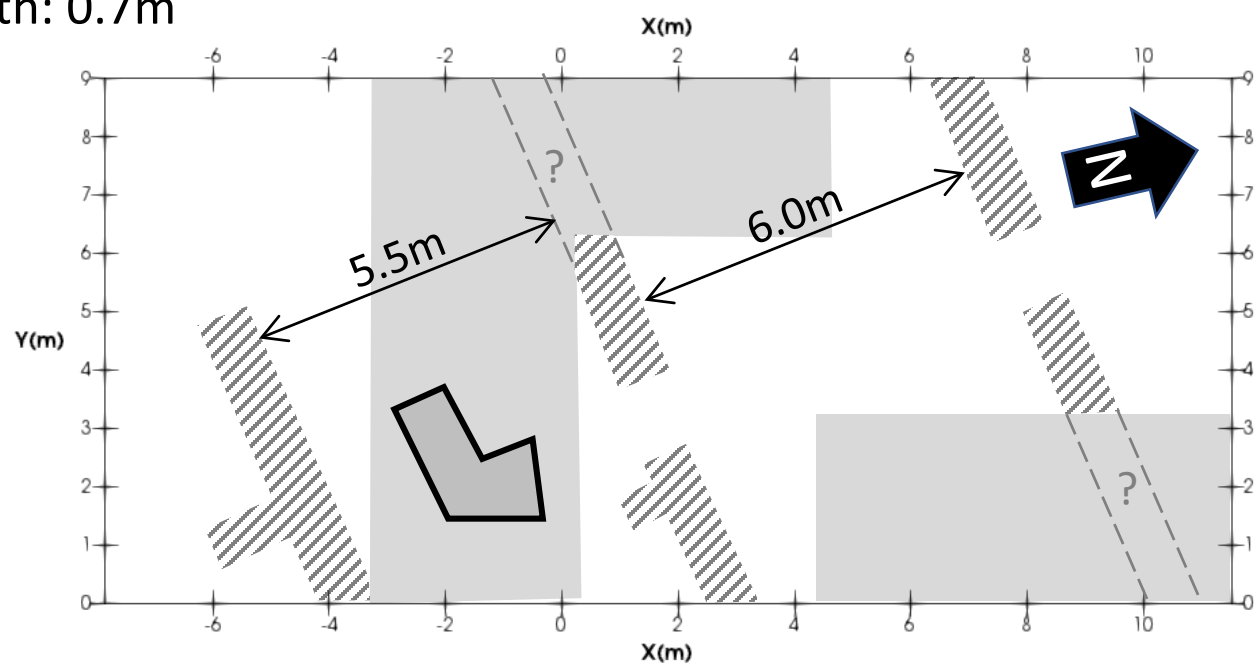
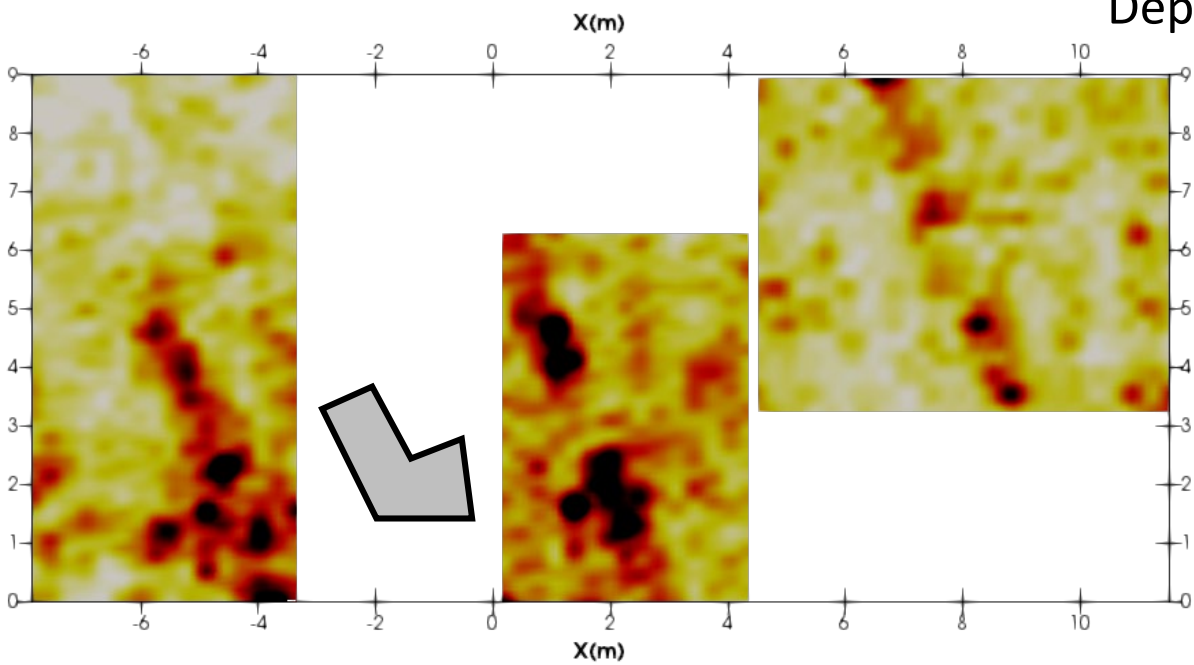
Depth: 0.9m



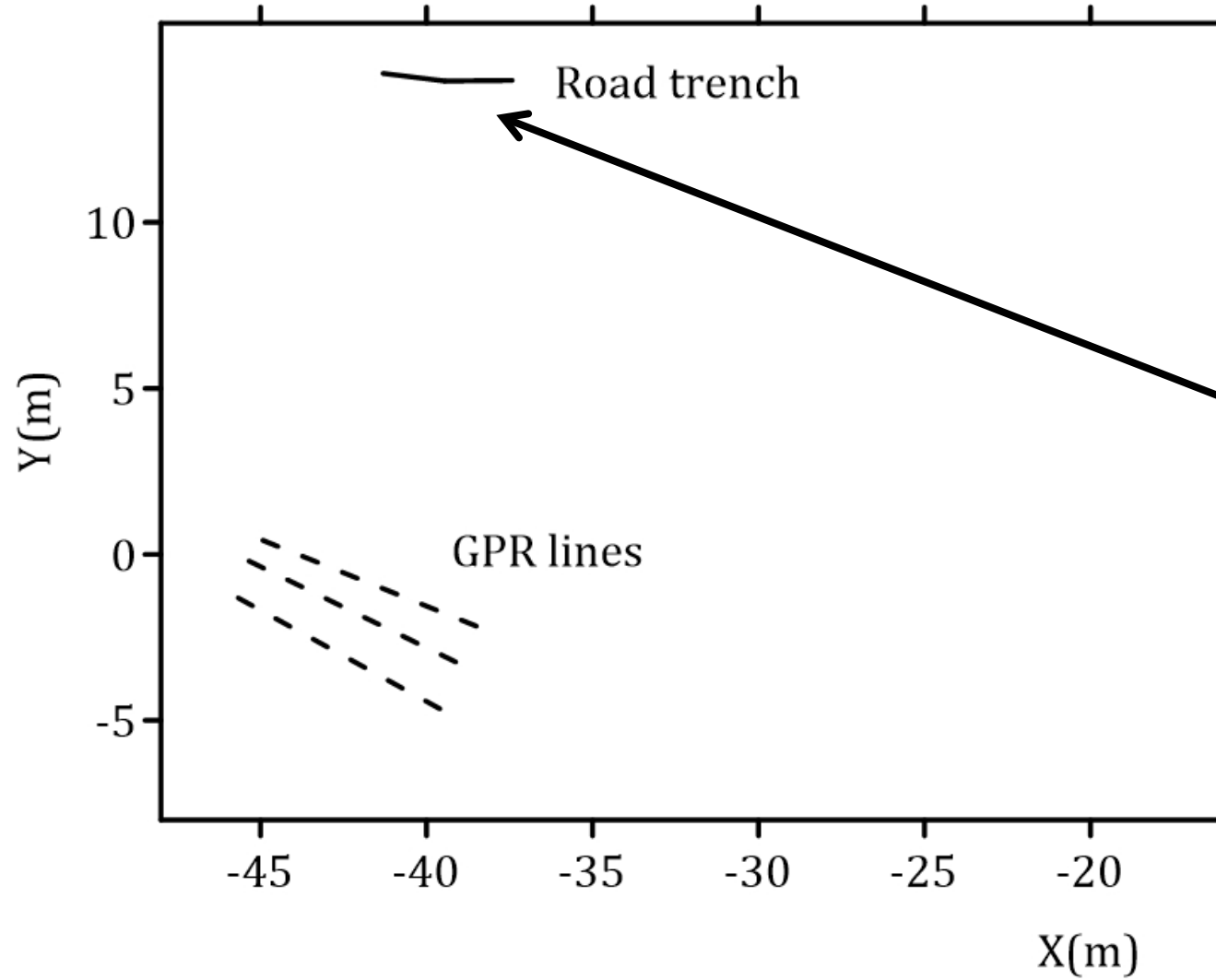
Depth: 0.4m

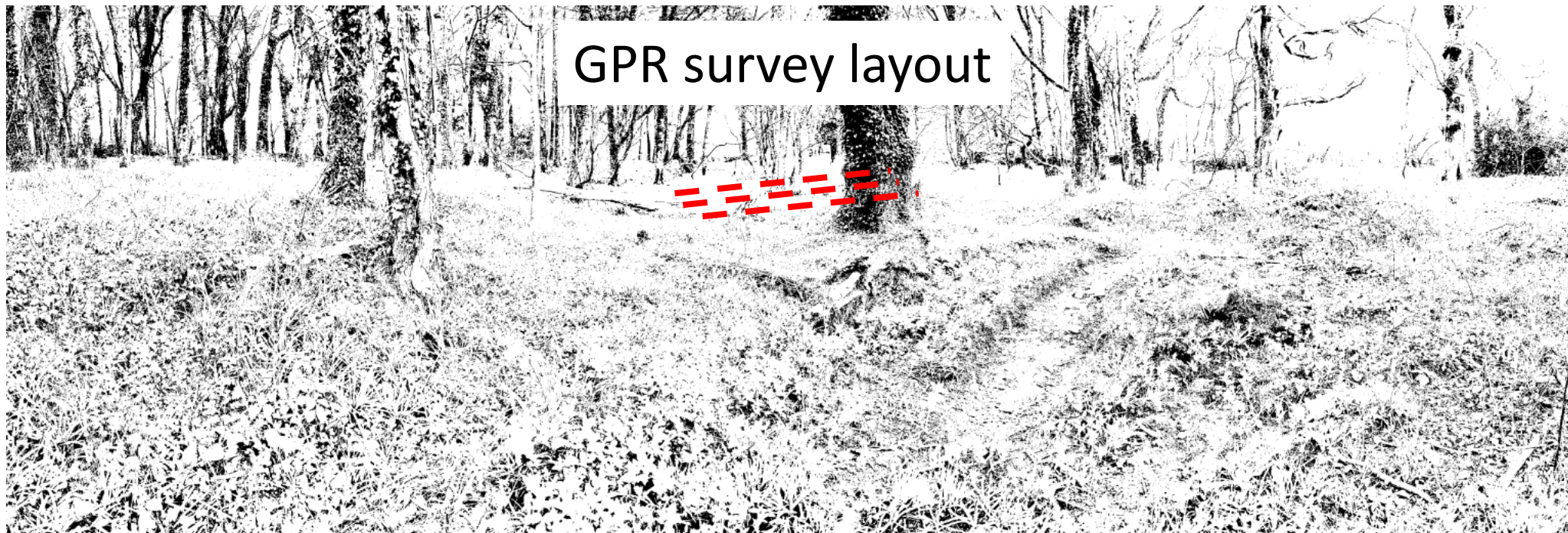


Depth: 0.7m



Road GPR surveys lines





GPR survey layout

Road GPR surveys lines

No clear reflection associated with a road feature. The lines may have been too short and incorrectly positioned.

